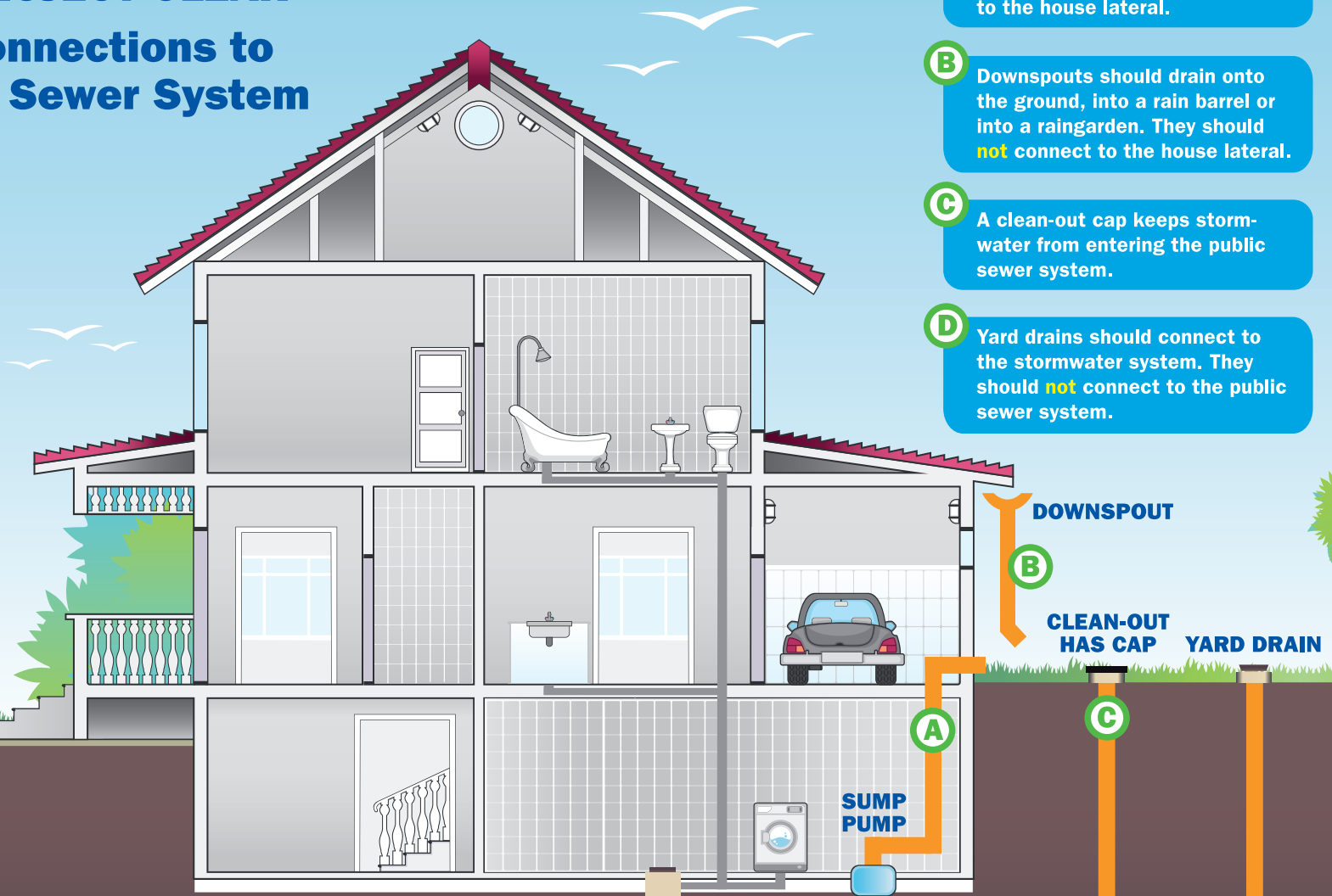


AFTER PROJECT CLEAR

Correct Connections to the Public Sewer System



A The sump pump should drain onto the ground. It should **not** connect to the house lateral.

B Downspouts should drain onto the ground, into a rain barrel or into a raingarden. They should **not** connect to the house lateral.

C A clean-out cap keeps stormwater from entering the public sewer system.

D Yard drains should connect to the stormwater system. They should **not** connect to the public sewer system.



project clear

ProjectClearSTL.org

Project Clear STL [projectclearstl](https://twitter.com/projectclearstl)